

FDOT District 4 SIS 2050 Multimodal Unfunded Needs Plan

Palm Beach MPO
Technical Advisory Committee Meeting
Wednesday, December 3, 2025



SIS 2050 Multimodal Unfunded Needs Plan

- Outlines a **long-term planning process that identifies future transportation needs** across various modes: highways, transit, freight, aviation, rail, seaports and spaceports.
- **Relies on input** from Metropolitan Planning Organizations (MPOs), regional partners, local governments, and modal agencies.
- **Uses data-driven methods**, such as traffic modeling and level-of-service (LOS) analyses, to validate needs based on population growth and land use.
- **Identifies potential financially-unconstrained projects, in which funding is not expected to be available** during the 25-year time period of the SIS Funding Strategy.
 - the **SIS Funding Strategy** includes the SIS Adopted First Five-Year Plan (Years 1 through 5), SIS Second Five-Year Plan (Years 6 through 10), and the SIS Cost Feasible Plan (Years 11 through 25) and is considered to be financially feasible, based upon current revenue forecasts.
- **Projects identified are not guaranteed to receive funding**; however, some projects may potentially advance into the MPO's LRTP or FDOT's SIS Funding Strategy
- **Some projects may not advance** due to various reasons, such as costs, environmental concerns, the proposed need not supported/justified based on data and analyses, policy direction, etc.

Ongoing and Remaining Tasks

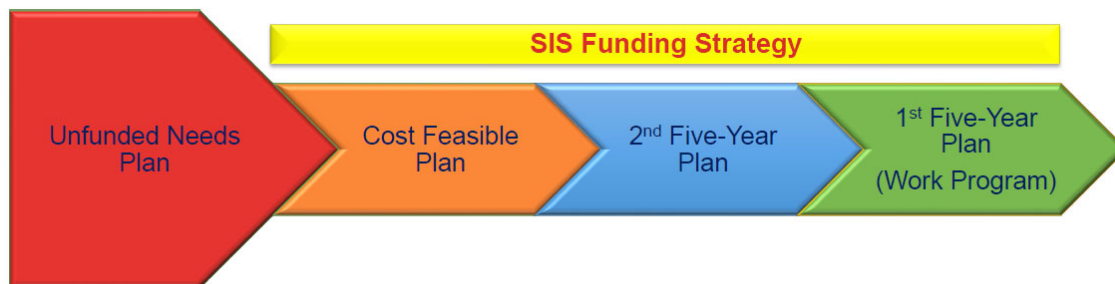


- Utilize regional planning models to project future traffic volumes through 2050
- Identify roadway failures and update unfunded SIS project phases accordingly
- Prepare construction and right-of-way cost estimates using FDOT's estimation system
- Develop a detailed final report with methodologies, project lists, and GIS data

3



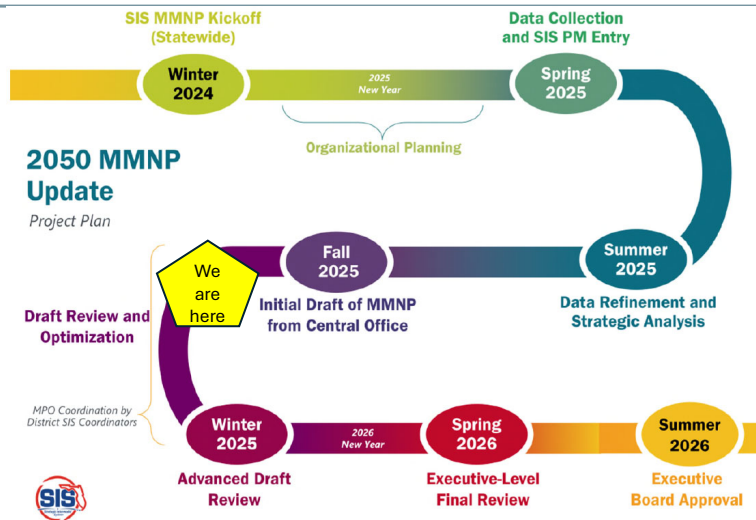
SIS Planning Process



4



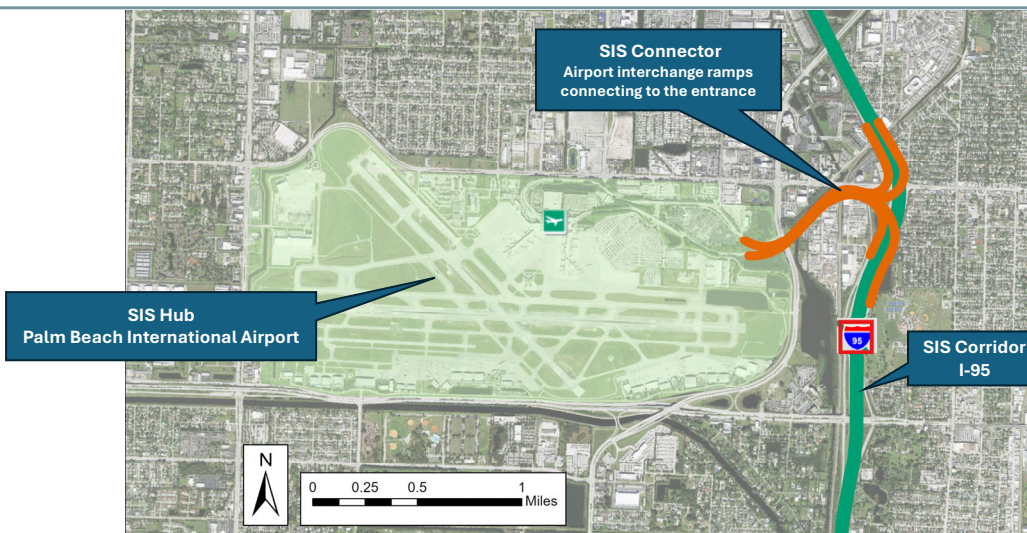
Timeline to Finalize the MMUNP



5



Palm Beach International Airport (PBIA)



11



SIS Project Funding Eligibility

Planning, design, right-of-way, and construction of additional lanes

New facilities, enlarged bridges, intersection/interchange modifications

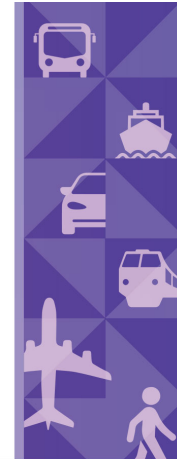
Intersections immediately impacting SIS entry or exit ramps; special use lanes

Shoulder improvements on approved corridors (to facilitate hard shoulder running); **major park-and-ride construction and connection(s)** (if it supports/facilitates **transit or express bus/special use lanes**)

Truck parking serving multiple purposes; **raising or replacement non-SIS bridges** that create clearance and capacity constraint of a SIS corridor

Infrastructure-based ITS capital improvements that are anticipated to improve throughput on and the operational capacity of a corridor

2023



STRATEGIC INTERMODAL SYSTEM
FUNDING
ELIGIBILITY

7

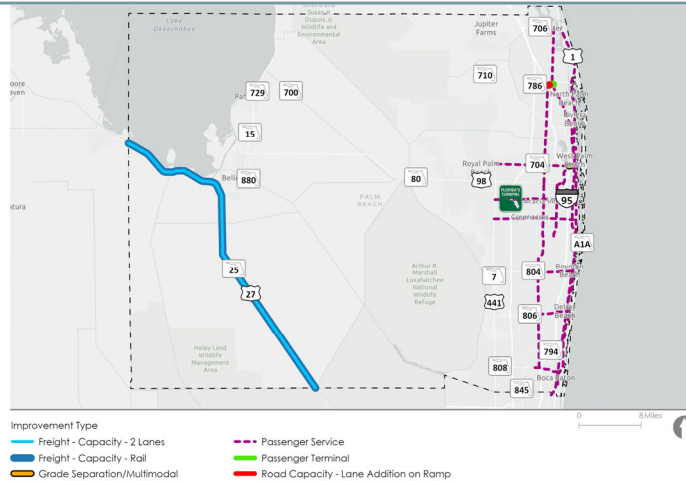


PROJECTS



8

Palm Beach MPO Vision 2050

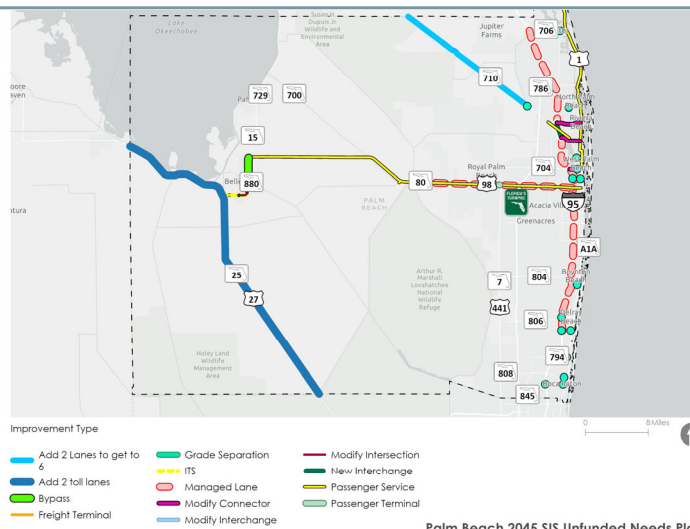


Palm Beach MPO Vision 2050

9



2045 SIS Unfunded Needs Plan



Palm Beach 2045 SIS Unfunded Needs Plan

10



STUDIES AND ANALYSES



11



FDOT State Safety Office

	Facility Name	From	To
1	S.R. 80 / Southern Boulevard	East Canal Street South	Lion Country Safari Road
2	South Main Street / S.R. 80	Southwest Martin Luther King, Jr. Boulevard	Entrance to American Care Medical Center
3	Northbound I-95 / S.R. 9	north of West Indiantown Road	north of Donald Ross Road
4	South Lake Avenue / S.R. 80	east of McClure Road	Shirley Drive
5	Connors Highway / S.R. 15	south of Southwest Kanner Highway	north of Entrance to Everde Growers - Sandcut Farm
6	Martin Luther King, Jr. Boulevard / S.R. 710	Entrance to CTS Engines	Entrance to Palm Beach International Raceway

12



FDOT State Safety Office

	Facility Name	From	To
7	U.S. 27 / S.R. 25	east of Evercane Road	west of Corkscrew Boulevard
8	I-95 / S.R. 9	I-95 northbound Peninsula on-ramp	Linton Road off-ramp
9	I-95 / S.R. 9	south of West Yamato Road	north of Glades Road
10	I-95 / S.R. 9	south of West Woolbright Road	Northwest 3rd Street
11	S.R. 80 / Southern Boulevard	Big Blue Trace	Forest Hill Boulevard
12	I-95 / S.R. 9	south of Palm Beach Lakes Boulevard	north of Okeechobee Boulevard

13



SEEKING FEEDBACK FROM THE PALM BEACH MPO TAC



14



Conclusion



Add costs to identified needs



Consolidate all projects and needs



Follow-up with MPO for additional clarification



Upload data in SIS-PM tool