



PALM BEACH
Metropolitan Planning
Organization



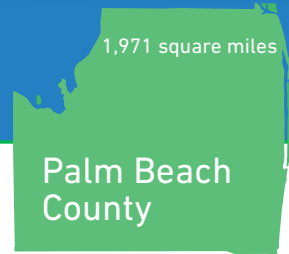
A MULTIMODAL SYSTEM

CONNECTING COMMUNITIES

With an eye on the future, the Palm Beach Metropolitan Planning Organization (MPO) maintains a long range forecast of population, employment, and transportation projects and services that advance our regional vision. The MPO Board annually adopts a funding program that prioritizes over \$700 Million of federal, state and local transportation dollars per year to implement those projects.

MISSION To collaboratively plan, prioritize, and fund the transportation system.

VISION A safe, efficient, and connected multimodal transportation system



874,288

Population in
39 Municipalities

671,677

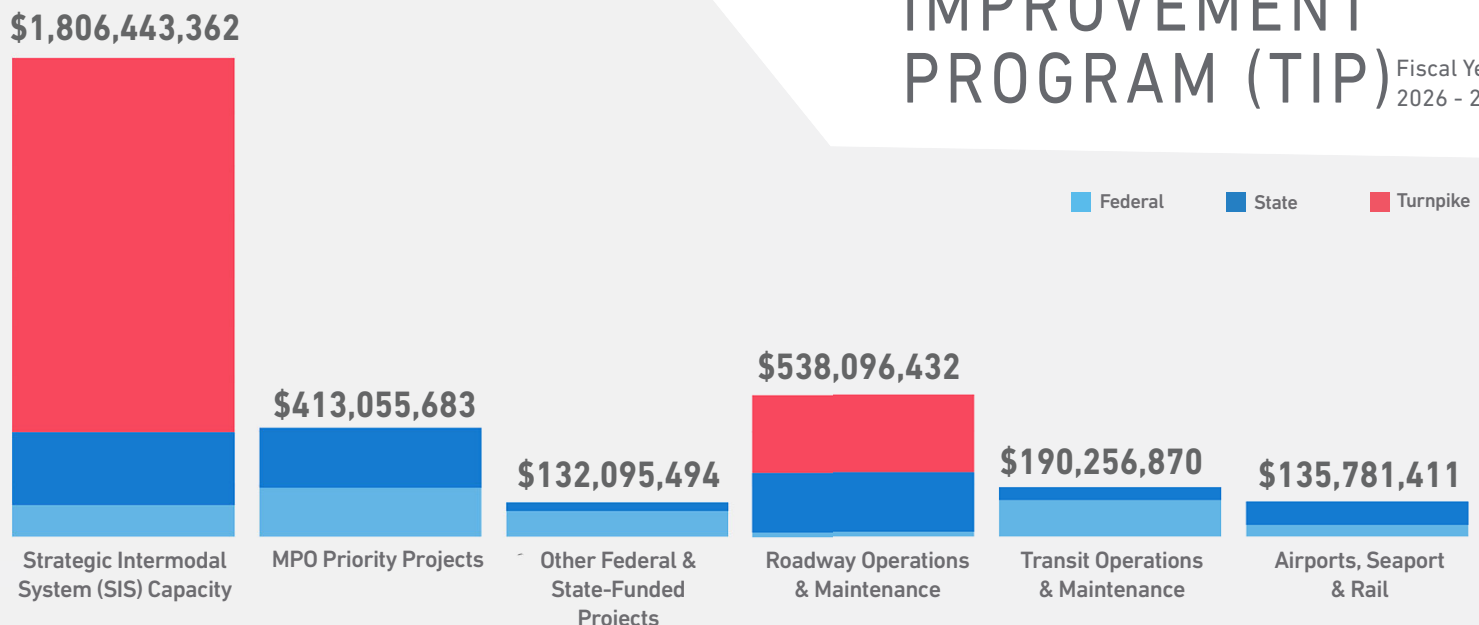
Population in
unincorporated
Palm Beach County

Source: BEBR April 2024



TIP Projects by Funding

\$3.22 BILLION in funds for the
TRANSPORTATION
IMPROVEMENT
PROGRAM (TIP) Fiscal Years
2026 - 2030





PALM BEACH Metropolitan Planning Organization



A CONNECTED SYSTEM

MPO INVESTMENT PRIORITIES

The TPA Priority Projects are consistent with the goals, objectives and values of the MPO's adopted Long Range Transportation Plan (LRTP) and further the MPO vision of creating a safe, efficient, and connected multimodal transportation system.

\$333,400,864

MAJOR PROJECTS

Major highway, transit and freight projects prioritized from the LRTP with federal and state funds. Includes MPO planning activities.



\$64,930,427

LOCAL INITIATIVES PROGRAM

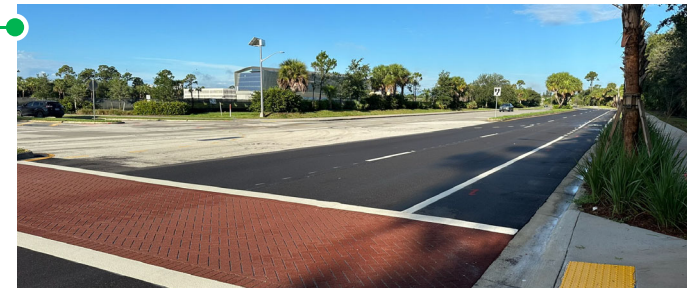
Lower cost, non-regionally significant projects with federal funds submitted annually to the MPO by local agencies. Projects are prioritized using a project scoring system based on adopted goals, objectives and values in the LRTP.



\$14,724,392

TRANSPORTATION ALTERNATIVES PROGRAM

Active transportation projects with federal funds annually submitted to the MPO by local agencies.



AN EFFICIENT SYSTEM

**GET
INVOLVED!**
PalmBeachMPO.org

FOLLOW US!
@PalmBeachMPO



Public participation is solicited without regard to race, color, national origin, age, sex, religion, disability or family status. For complaints, questions, or concerns about civil rights or nondiscrimination, please contact the MPO via email at Info@PalmBeachMPO.org or call 561.725.0800.

MPO GOVERNING BOARD

5 County Commissioners

1 Port Commissioner

15 Elected Officials from our largest 13 municipalities

