



Countywide Transportation Master Plan

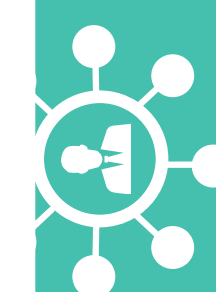
Vison Zero Advisory Committee Meeting
December 4, 2025

Project Schedule

[illegible]

Public & Stakeholder Engagement

Outreach



**BOARD OF COUNTY
COMMISSIONERS**

**PALM BEACH COUNTY
BUSINESS INTEREST
GROUPS**

PALM BEACH
CITY MANAGEMENT ASSOCIATION

**39 MUNICIPALITIES &
70+ STAKEHOLDER
GROUPS**

Website



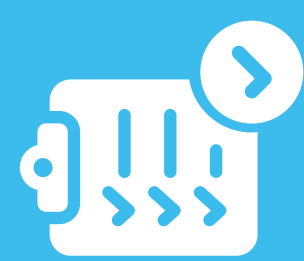
PBCMOVES.COM
5.9K ACTIVE USERS

894 PROJECT EMAIL
SUBSCRIBERS

ONGOING PROJECT
UPDATES VIA EBLAST

Initial Outreach

Public Survey



Five coordinated surveys (Aug. 27 – Oct. 18)

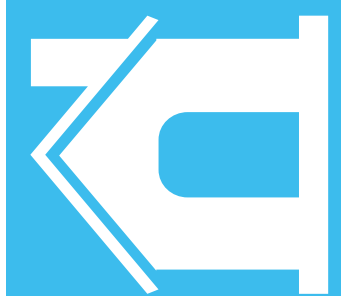
- » Conducted in English, Spanish, and Haitian Creole
- » General public/elected official
- » Business community
- » Technical stakeholders

1,583

RESPONSES IN TOTAL

SAMPLE OF QUESTIONS

- » Rank transportation challenges
- » Rank transportation improvements
- » Willingness to use public transportation more often
- » Tell us how can our transportation system improve quality of life for residents
- » Tell us which technologies the County should prepare for by 2050



Open Houses

12 PUBLIC MEETINGS SEPTEMBER OCTOBER

- » Approximately 400 attendees across all

FORMAT OF OPEN HOUSES

- » Presentation of informational boards with project details and existing conditions
- » Introduction presentation, project overview,
- » Interactive polling session to for participants to rank their priorities and share additional feedback

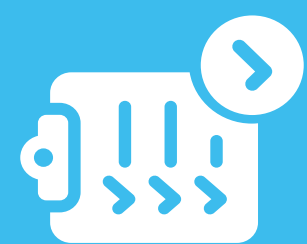
WAYS TO COMMENT

- » Polling and static maps for participants to provide comments/concerns
- » Participants provided with project overview handout with project website to complete full survey, signup for project updates and project team contact info

OPEN HOUSE LOCATIONS

- » PBC Library: Palm Beach Gardens Branch
- » Palm Beach State College: Loxahatchee Campus
- » PBC Library: Summit Branch
- » Delray Beach Arts Garage
- » PBC Library: Canyon Branch
- » PBC Government Center Chambers
- » Riviera Beach CRA Community Center
- » PBC Vista Center
- » PBC Library: Belle Glade Branch
- » Palm Beach State College: Palm Beach Gardens Branch
- » Greenacres Community Center
- » Online/Virtual Meeting

Key Findings



OVERALL FEEDBACK

Recurring themes:

- » Traffic congestion cited as major challenge
- » Better east/west connectivity
- » Improved transit options in suburban and western areas
- » Strong support for safer, more complete streets
- » Coordinated land use and environmental preservation

PREDOMINANT FEEDBACK

Technology and innovation attracted the most attention, with 821 respondents showing strong interest in:

- » Electric vehicles and supporting charging infrastructure
- » On-demand shuttles and shared mobility collaborations
- » Smart traffic management technologies
- » Support for public–private partnerships to test technology solutions to ease congestion

Data Inventory– Relevant Plans

Consistent Themes

- East-West Connectivity
- Safety and Security
- Mode Choice
- Complete Streets
- Sustainability

A wide range of information as submitted, including:

- Comprehensive plans
- Strategic Plans
- Mobility Plans
- Redevelopment Plans (CRA)
- Complete Streets Plans and Policies
- Bicycle & Pedestrian Master Plans
- TOD Plans
- Capital Improvement Plans (CIP)
- Zoning Code/Land Use Plans
- Vision Zero/Safe Streets Plans
- Sustainability Plans
- Master Plans (Downtown/Corridor)

CTMP Four Pillars



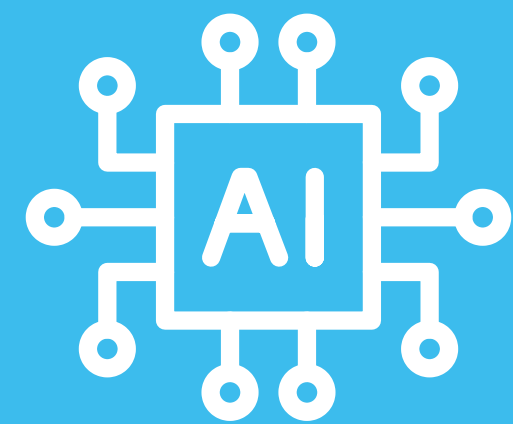
Safety

- » Focus on meeting Vision Zero goals
- » Improve pedestrian/bike safety
- » Apply Context Classifications to design roads that match surrounding land use and travel behavior.



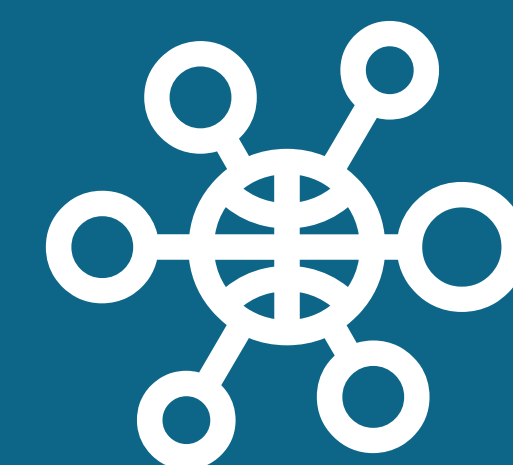
Connectivity

- » Enhance East/West Connections to reduce congestion and improve regional access.
- » Bridge gaps between major corridors and local networks.
- » Opportunities for intermodal connectivity



Technology

- » Investigate array of technology options and partnerships
- » Support smart signals, sensors, and data-driven decision-making
- » Collaborate with FDOT for Intelligent Transportation Systems (ITS) for real-time traffic management



Mobility Choice

- » Expand high quality transit options
- » Expand micro-mobility / last-mile options and develop policy recommendations
- » Promote Mobility as a Service (MaaS) for integrated trip planning and payment

Next Steps for CTMP

Evaluate Future Growth and Transportation Demand

Develop Recommended Goals, Objectives and Policies

Develop Recommended Design Principles

Corridor and Subarea Analysis



What is Currently Being Worked on?

S1: DISCOVER	S2 : ENVISION	S3: STRATEGIZE	S4: ENACT
--------------	---------------	----------------	-----------



Fall 2025 (Sept-Oct)

1. Finalize the Public Involvement Plan (PIP)
2. Finalize Guiding Principles
3. Refine survey outreach strategies
4. Complete initial public outreach meetings and sentiment analysis
5. Continue data collection from municipalities and stakeholders
6. Continue roadway conditions analysis
7. Continue developing GIS data portal for integration with pbcmoves.com



Fall 2025 (Oct–Nov)

1. October 6th, 2025
Host Public Meeting at PBC Library Belle Glade Branch
2. October 15th, 2025
Host meeting for Steering Committee Technical Advisors and Business Group Stakeholders up-dates
3. October 29th, 2025
Host Public Meeting at Greenacres Community Center
4. November 3rd, 2025
Facilitate first Steering Committee Technical Advisors meeting
5. Ongoing efforts for Tasks 6–9 (data collection, demand projections, goals/objectives, and design principles)
6. November 5th, 2025
BCC Project Update

What is Upcoming? (Next Steps & Public Input Opportunities)

Land Use in the CTMP

- » The CTMP integrates land use and transportation for sustainable, connected growth
- » Emphasizes multimodal connectivity, trip reduction, and interjurisdictional coordination
- » Serves as a guiding framework, not a regulatory or zoning document
- » Transportation recommendations are based on existing and future land uses (Zoning & Future Land Use Maps) adopted by Palm Beach County and 39 municipalities
- » The CTMP will test scenarios that provide an opportunity to tweak land use assumptions

PALM BEACH COUNTY COUNTYWIDE TRANSPORTATION MASTER PLAN

MEMORANDUM

To: Mayor, Vice Mayor, and Commissioners

From: Claudia Bilotto, WSP

Date: October 23, 2025

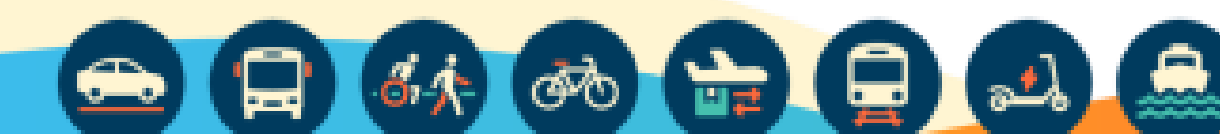
Subject: Land Use and the Palm Beach Countywide Transportation Master Plan

This memorandum highlights the land use considerations that are part of the Palm Beach Countywide Transportation Master Plan and related deliverables.

The Plan will make transportation recommendations based on existing and future land uses as defined by adopted Zoning & FLU maps. This is a snapshot in time based on projections as currently adopted by PBC & the 39 municipalities. The recommendations will address constraints and plan for multimodal concepts to balance projected (adopted) growth against current conditions.

The Plan will identify priority areas where major traffic concerns or opportunities can be addressed through recommended multimodal concepts based on current land use and zoning. Location-specific changes to land use & zoning densities and intensities will not be provided, but conceptual land use changes that incentivize transportation improvements and enable implementation of the goals and objectives of the plan will be directed back to local jurisdictions to potentially study further for specific traffic-related impacts or for detailed implementation strategies. For example, in the 11 (5 N/S and 6 E/W) corridors identified by TPA as the 561 Plan consideration of mixed-use zoning policies that enable trip capture and reduce traffic impacts by introducing housing options near commercial nodes is recommended. These 5 N/S corridors are Tri-Rail, Coastal Link, US 1, Congress Avenue, Military Trail while the 6 E/W corridors are Okeechobee Boulevard, Forest Hill Boulevard, Lake Worth Road, Boynton Beach Boulevard, Atlantic Avenue, and Glades Road.

The Plan will identify areas with significant transportation and growth constraints and outline multi-modal solutions enabled through potential land use changes. For example, the Okeechobee



pbcmoves.com

What the CTMP Will & Will Not Do

The Plan Will:

- » Identify areas with transportation/growth constraints and recommend multimodal solutions supported by land use.
- » Provide an online tool to assess how development aligns with transportation recommendations.

The Plan Will Not:

- » Recommend site-specific land use or zoning changes.
- » Propose specific densities or intensities.
- » Be used to deny future projects (per Florida statutes).



Questions?

Subscribe to Project Updates

PBCMoves.com